

Basket 351 Coffee Table

Design Gordon Guillaumier

Technical Information



BASKET is a project characterized by the extreme formal simplicity, and composed of elegant modular sofas and side tables, created to take full advantage of the available space and make elegant and sophisticated every living area. The sturdy powder coated stainless steel structure, available in smoke or milk colour, the elegance of the top, make the BASKET coffee table an very versatile product, which can be harmoniously matched with any collections.

TECHNICAL INFORMATION

DESCRIPTION
Coffee Table for outdoor use.

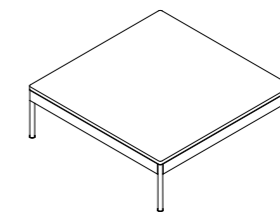
STRUCTURE
Powder coated stainless steel.

TOP
Stone.

WEIGHT
Stone top 52 kg

STORAGE COVER
Available.

DIMENSION
L 90 x P 90 x H 30 cm
W 35" ³/₈ x D 35" ³/₈ x H 11" ⁷/₈



Materials

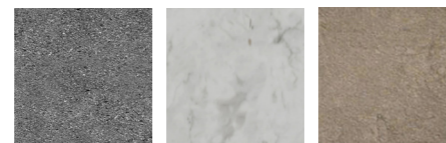
METAL



Smoke

Milk

TOP / STONE



Luna stone

Carrara
marble

Farsena

Basket 355 Coffee Table

Design Gordon Guillaumier

Technical Information



BASKET is a project characterized by the extreme formal simplicity, and composed of elegant modular sofas and side tables, created to take full advantage of the available space and make elegant and sophisticated every living area. The sturdy powder coated stainless steel structure, available in smoke or milk colour, the elegance of the top, make the BASKET coffee table an very versatile product, which can be harmoniously matched with any collections.

TECHNICAL INFORMATION

DESCRIPTION
Coffee table for outdoor use.

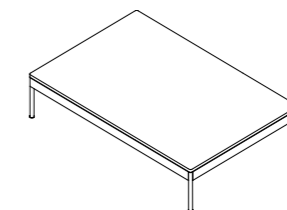
STRUCTURE
Powder coated stainless steel.

TOP
Stone.

WEIGHT
Stone top 90 kg

STORAGE COVER
Available.

DIMENSION
L 135 × P 90 × H 30 cm
W 53" ¹/₈ × D 35" ³/₈ × H 11" ⁷/₈



Materials

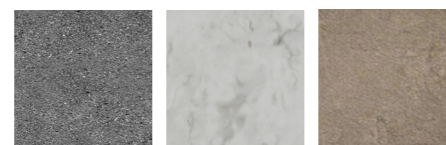
METAL



Smoke

Milk

TOP / STONE



Luna stone

Carrara
marble

Farsena